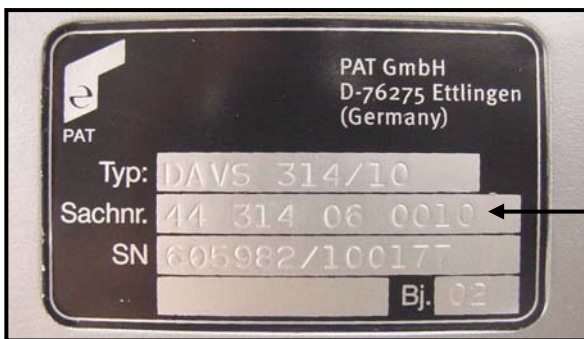
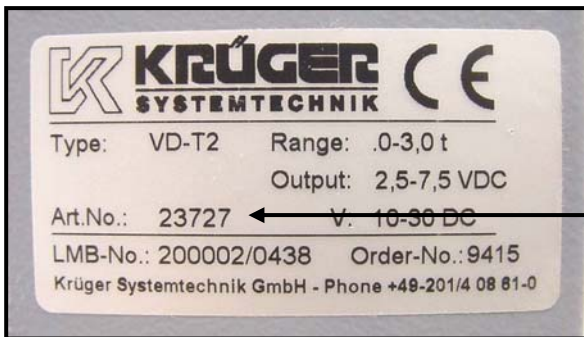
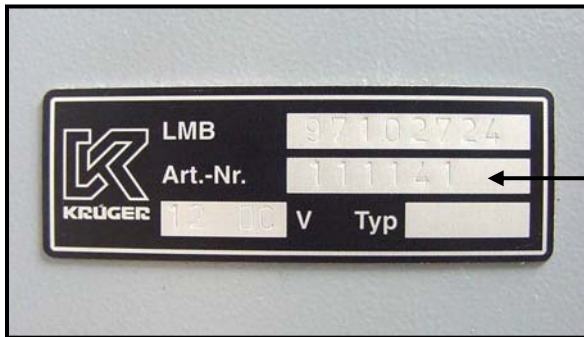


This form was created to help dealers determine the correct part number of a PAT product. There are several examples listed below of the most commonly found identification labels. The arrows point to the "Part Number" area of each label. Finding this number will be very helpful when calling for service or replacement parts.

Part Number



Hirschmann Electronics, Inc.
1665 Orchard Drive
Chambersburg, PA 17201

Phone: (717) 263-7655
Fax: (717) 263-7845
Email: info@patamerica.com

www.hirschmann-usa.com

